

# Curvy Kate<sup>®</sup>

D - K cup



JUNE 2020 - DECEMBER 2020



WE MAKE  
*women*  
... FEEL ...  
*fabulous*  
ABOUT THEIR  
*curves*

*Core Value*

## WOW THE CUSTOMER

We focus on customer happiness

We find new ways to make customers feel great

We seek feedback and aim to exceed expectations

*Core Value*

## ALWAYS BE BETTER

We seek innovation and constant improvement

We encourage ideas and embrace change

We acknowledge mistakes and learn from them

*Core Value*

## WORK AS A TEAM

We set clear goals and take responsibility

We respect and support each other

We have a shared passion and enjoy working with each other

# MEET OUR MODELS

Our models are found through our renowned Star in a Bra competition, via social media and through our recent campaign #IamCurvyKate. We celebrate diversity and believe that all women should feel fabulous about their curves.



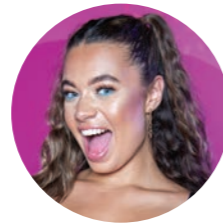
**LAURA** • 30GG • 14  
Teacher



**JAZ** • 30F • 10  
Student



**LAUREN** • 30G • 12  
Finance Executive



**TASH** • 30G • 12  
Model and Influencer



**ABBY** • 32J • 14  
Model and Influencer



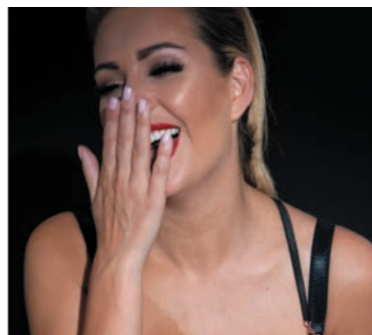
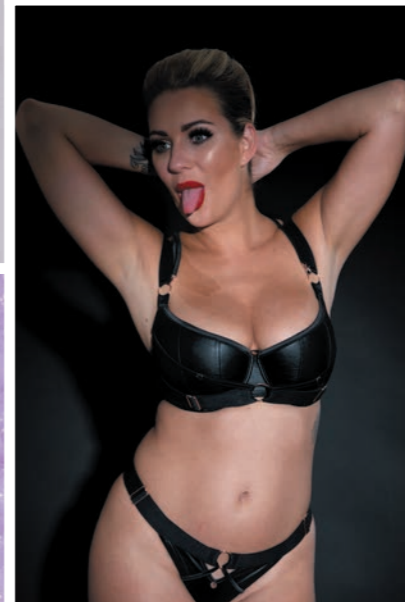
**JAY** • 30G • 8  
Social Media Executive



**SIMONE** • 30G • 12  
Model and Influencer



**HOLLY** • 30G • 10  
Model, Makeup Artist and Influencer



# LET'S GET SOCIAL

We have been communicating our brand message on social media since 2009 and we now have one of the largest followings in the industry.



## 3 DAYS, 150 WOMEN, 99 SIZES

We invited 150 fabulous women to take part in a 3 day photoshoot and bra fitting event in a London pop-up shop, for our #IamCurvyKate campaign. The campaign was all about celebrating the fact that bodies are unique and that bras look different on everyone, even in the same cup size.

“What an amazing campaign! Truly promoting every body shape and size.”

Capitalstyle



LIKES  
223K



FOLLOWERS  
186K



SUBSCRIBERS  
58.1K



FOLLOWERS  
44.5K

# CURVY KATE SOLUTIONS

10 | In My Dreams



14 | SuperPlunge Multiway



16 | Luxe



18 | Luxe Basque



20 | Smoothie Strapless

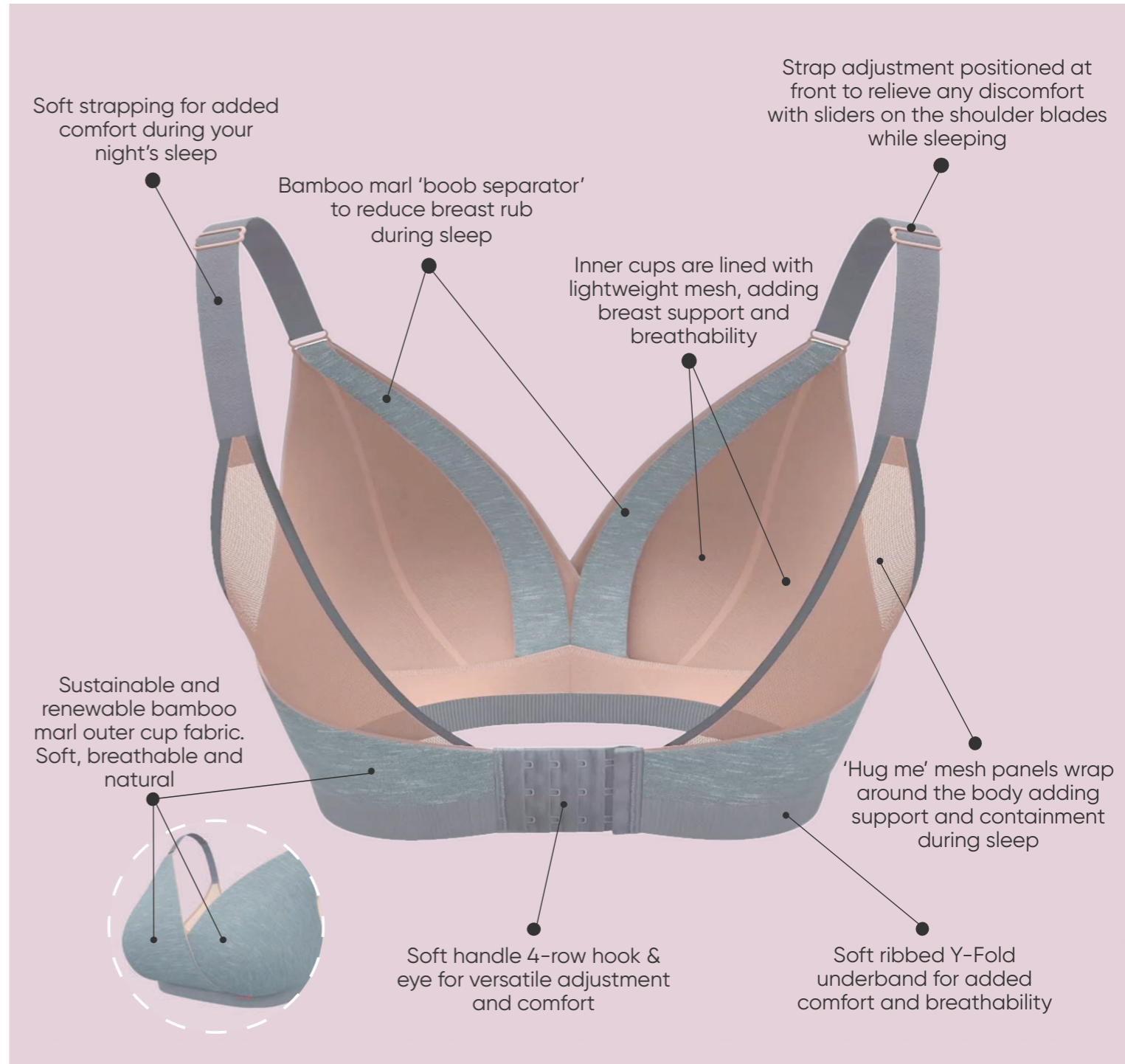


22 | Smoothie Soul



# IN MY DREAMS DD-JJ cups

NEW





# IN MY DREAMS *DD-JJ cups*

Introducing Curvy Kate's first ever sleep bra! In My Dreams is made from sustainable and renewable bamboo marl which is lightweight and breathable and designed to keep you comfortable and supported while you sleep. Non-padded and non-wired, the sleep bra has an innovative 'boob separator' to reduce breast rub and 'hug me' mesh panels that wrap around the body to add support and containment. Customer feedback tells us that a sleep bra is a welcome, and long awaited, addition to the Curvy Kate range!



Sleep Bra  
CK021110  
NON-WIRED



Sleep Bra  
CK021110



Grey/Peach | Continuity from September 2020 **NEW**

	DD/E	F/FF	G/GG	H/HH	J/JJ
30	•	•	•	•	•
32	•	•	•	•	•
34	•	•	•	•	•
36	•	•	•	•	•
38	•	•	•	•	•
40	•	•	•	•	•



# SUPERPLUNGE MULTIWAY *D-J cups*

For all those outfits you thought you could never wear, Curvy Kate now has the solution! Our lowest ever plunge has a low back converter, plus multiway straps that allows for a huge variety of exciting looks. Foam padded cups tailor the fit to bring the bust in and up, whilst each multiway position offers a plunging and flattering neckline so that you feel fabulous and supported.



Padded Plunge Bra  
CK022107  
MULTIWAY



Latte | Continuity



Black | Continuity

	D	DD	E	F	FF	G	GG	H	HH	J
28	•	•	•	•	•	•	•	•	•	•
30	•	•	•	•	•	•	•	•	•	•
32	•	•	•	•	•	•	•	•	•	•
34	•	•	•	•	•	•	•	•	•	•
36	•	•	•	•	•	•	•	•	•	•
38	•	•	•	•	•	•	•	•	•	•
40	•	•	•	•	•	•	•	•	•	•

## SUGGESTED OPTIONS:



CROSS BACK



OPEN BACK



ONE SHOULDER



BACKLESS







# LUXE *D-J cups*

The unmissable Luxe strapless multiway bra has a proven track record- our bestselling bra has been tested on trampolines and space-hoppers, and it stayed up! The soft, flat seam cups give great coverage and a fantastic rounded shape, while the internal side sling and silicone strips offer secure and comfortable all-day wear. Now available in four great shades for even more versatility.



Strapless / Multiway Bra  
CK2601

MULTIWAY STRAPLESS

 Caramel | Continuity

 Ivory | Continuity

 Biscotti | Continuity

 Black | Continuity

	D	DD	E	F	FF	G	GG	H	HH	J
28	•	•	•	•	•	•	•	•	•	•
30	•	•	•	•	•	•	•	•	•	•
32	•	•	•	•	•	•	•	•	•	•
34	•	•	•	•	•	•	•	•	•	•
36	•	•	•	•	•	•	•	•	•	•
38	•	•	•	•	•	•	•	•	•	•
40	•	•	•	•	•	•	•	•	•	•



Cheeky Short  
CK017215

 Caramel | Continuity

10 12 14 16 18 20 22





# LUXE BASQUE *D-J cups*

With the same proven lift as our bestselling strapless bra, the Luxe basque has a host of features to ensure support and wearability. The body has soft vertical seams for comfort and smoothness under clothes, while the adjustable back fastening fits a variety of body shapes. With detachable suspenders and multiway straps, this is surely the most versatile piece in our collection.



Strapless Basque  
CK017707

Strapless Basque  
CK017707

- LUXE FIT
- MULTIWAY STRAPLESS
- REMOVABLE SUSPENDERS

- Black | Continuity
- Ivory | Continuity

	D	DD	E	F	FF	G	GG	H	HH	J
30	•	•	•	•	•	•	•	•	•	•
32	•	•	•	•	•	•	•	•	•	•
34	•	•	•	•	•	•	•	•	•	•
36	•	•	•	•	•	•	•	•	•	•
38	•	•	•	•	•	•	•	•	•	•
40	•	•	•	•	•	•	•	•	•	•



# SMOOTHIE STRAPLESS *D-J cups*

The ultra-smooth design of our latest strapless bra offers minimum lines and maximum support. The inner side sling keeps the cup rounded and uplifted, whilst the seam free, powernet-lined wings ensure the smoothest of looks all the way around. Concealed, soft plastic boning and silicone strips offer a secure and supported shape and down till dusk, slip-free comfort.



Moulded Bra  
CK008109

MULTIWAY STRAPLESS



Moulded Bra  
CK008109

 Latte | Continuity

 Black | Continuity

	D	DD	E	F	FF	G	GG	H	HH	J
28										
30										
32										
34										
36										
38										
40										
42										
44										



# SMOOTHIE SOUL *D-J cups*

The Smoothie Soul moulded plunge bra offers amazing lift and shape coupled with classic smooth cups that make this the perfect t-shirt bra. With pink accents and a J-hook for easy racerback conversion, this bra should be a staple of any underwear drawer.



Moulded Plunge Bra  
CK5511



 Black | Continuity

 Latte | Continuity

	D	DD	E	F	FF	G	GG	H	HH	J
30	•	•	•	•	•	•	•	•	•	•
32	•	•	•	•	•	•	•	•	•	•
34	•	•	•	•	•	•	•	•	•	•
36	•	•	•	•	•	•	•	•	•	•
38	•	•	•	•	•	•	•	•	•	•



Brazilian  
CK5505

 Black | Continuity

 Latte | Continuity

	8	10	12	14	16	18	20
8	•	•	•	•	•	•	•
10	•	•	•	•	•	•	•
12	•	•	•	•	•	•	•
14	•	•	•	•	•	•	•
16	•	•	•	•	•	•	•
18	•	•	•	•	•	•	•
20	•	•	•	•	•	•	•

# CURVY KATE EVERYDAY

- 26 | Top Spot
- 28 | Victory
- 30 | Moody Bloom
- 32 | Dottie
- 34 | Victory Pin-Up
- 36 | Smoothie T-Shirt Balcony
- 38 | DelightFull
- 40 | WonderFull
- 42 | Unwind





# TOP SPOT *D-K cups*

Our new everyday classic balcony is already proving super popular amongst the Curvy Kate crowd! Using our proven Upfront Technology, Top Spot is packed with features to enhance your curves. The sheer stretch mesh in the top cup is flexible, yet supportive, while the double lined lower cups offer forward projection and a rounded shape.



Balcony Bra  
CK015100

UPFRONT TECHNOLOGY



Short  
CK015201



Sunshine | Available June 2020 **NEW**



White | Continuity



Black | Continuity

	D	DD	E	F	FF	G	GG	H	HH	J	JJ	K
30	•	•	•	•	•	•	•	•	•	•	•	•
32	•	•	•	•	•	•	•	•	•	•	•	•
34	•	•	•	•	•	•	•	•	•	•	•	•
36	•	•	•	•	•	•	•	•	•	•	•	•
38	•	•	•	•	•	•	•	•	•	•	•	•
40	•	•	•	•	•	•	•	•	•	•	•	•
42	•	•	•	•	•	•	•	•	•	•	•	•
44	•	•	•	•	•	•	•	•	•	•	•	•



Sunshine | Available June 2020 **NEW**



White | Continuity



Black | Continuity

	8	10	12	14	16	18	20	22
•	•	•	•	•	•	•	•	•



# VICTORY *D-K cups*

Curvy Kate's stunning 4-part balcony bra has side support and Upfront Technology, designed to uplift and shape your curves. Victory offers exceptional fit and is made to pull the bust in from the side for a great natural shape. Sleek and stylish, the mesh panelling and fashionable cut out keep this key staple a bestseller season after season.



Balcony Bra  
CK9001



Short  
CK9003



Navy | Available September 2020 **NEW**



Black | Continuity



Latte | Continuity

	D	DD	E	F	FF	G	GG	H	HH	J	JJ	K
30	•	•	•	•	•	•	•	•	•	•	•	•
32	•	•	•	•	•	•	•	•	•	•	•	•
34	•	•	•	•	•	•	•	•	•	•	•	•
36	•	•	•	•	•	•	•	•	•	•	•	•
38	•	•	•	•	•	•	•	•	•	•	•	•
40	•	•	•	•	•	•	•	•	•	•	•	•
42	•	•	•	•	•	•	•	•	•	•	•	•
44	•	•	•	•	•	•	•	•	•	•	•	•



Navy | Available September 2020 **NEW**



Black | Continuity



Latte | Continuity

	8	10	12	14	16	18	20	22
•	•	•	•	•	•	•	•	•



# MOODY BLOOM *D-K cups*

This season's prettiest print showcases gorgeous vivid blossoms on a deep black base. The balcony bra features our Upfront Technology and has a lower laminate cup that gives a great lift and projection, while the contrasting delicate lace of the top cup is lightweight and supportive.



Balcony Bra  
CK030100

UPFRONT TECHNOLOGY



Brazilian  
CK030202



Black Print | Available August 2020 **NEW**

	D	DD	E	F	FF	G	GG	H	HH	J	JJ	K
32	•	•	•	•	•	•	•	•	•	•	•	•
34	•	•	•	•	•	•	•	•	•	•	•	•
36	•	•	•	•	•	•	•	•	•	•	•	•
38	•	•	•	•	•	•	•	•	•	•	•	•
40	•	•	•	•	•	•	•	•	•	•	•	•
42	•	•	•	•	•	•	•	•	•	•	•	•
44	•	•	•	•	•	•	•	•	•	•	•	•



Black Print | Available August 2020 **NEW**

	10	12	14	16	18	20	22
•	•	•	•	•	•	•	•





# DOTTIE *DD-HH cups*

Dottie is a fantastic everyday range, perfectly echoing Curvy Kate's spirit with a youthful vibe. Fun and flirty, this spotted balcony bra offers a gorgeous rounded shape and has a sheer top cup that complements the soft spotted lace below.



Balcony Bra  
CK6201



Black | Continuity

	DD	E	F	FF	G	GG	H	HH
30	•	•	•	•	•	•	•	•
32	•	•	•	•	•	•	•	•
34	•	•	•	•	•	•	•	•
36	•	•	•	•	•	•	•	•
38	•	•	•	•	•	•	•	•
40	•	•	•	•	•	•	•	•



Short  
CK6203



Black | Continuity

	8	10	12	14	16	18	20
•	•	•	•	•	•	•	•



# VICTORY PIN-UP *D-K cups*

Based on our best-selling Victory shape, Victory Pin-Up adds some sophisticated glamour for an elegant and stylish look. The 4-part balcony cup is enhanced with a pinstripe overlay and flattering strapping detail. A great everyday fit with styling that will take you into the night.



Balcony Bra  
CK020102

VICTORY FIT



Short  
CK020201



Black/Slate | Available July 2020 **NEW**



Black/Slate | Available July 2020 **NEW**

	D	DD	E	F	FF	G	GG	H	HH	J	JJ	K
30	•	•	•	•	•	•	•	•	•	•	•	•
32	•	•	•	•	•	•	•	•	•	•	•	•
34	•	•	•	•	•	•	•	•	•	•	•	•
36	•	•	•	•	•	•	•	•	•	•	•	•
38	•	•	•	•	•	•	•	•	•	•	•	•
40	•	•	•	•	•	•	•	•	•	•	•	•
42	•	•	•	•	•	•	•	•	•	•	•	•
44	•	•	•	•	•	•	•	•	•	•	•	•

	8	10	12	14	16	18	20	22
•	•	•	•	•	•	•	•	•



# SMOOTHIE T-SHIRT BALCONY *D-K cups*

Our super smooth T-Shirt bra was made not to be seen! The seamless cups allow this moulded balcony bra to become almost invisible under clothing, while the inner sling keeps the cup rounded and uplifted. Seam free, powernet-lined wings ensure the smoothest of looks all the way around, and concealed, soft plastic boning at the side seam offers added support and comfort.




Moulded Bra  
CK007103



Moulded Bra  
CK007103

 Latte | Continuity

 Black | Continuity

	D	DD	E	F	FF	G	GG	H	HH	J	JJ	K
30	•	•	•	•	•	•	•	•	•	•	•	•
32	•	•	•	•	•	•	•	•	•	•	•	•
34	•	•	•	•	•	•	•	•	•	•	•	•
36	•	•	•	•	•	•	•	•	•	•	•	•
38	•	•	•	•	•	•	•	•	•	•	•	•
40	•	•	•	•	•	•	•	•	•	•	•	•
42	•	•	•	•	•	•	•	•	•	•	•	•
44	•	•	•	•	•	•	•	•	•	•	•	•
46	•	•	•	•	•	•	•	•	•	•	•	•



# DELIGHTFULL *DD-K cups*

This 4-part full cup bra with Cushion Comfort™ follows the contour of the body, with a stretch lace top cup which flexibly fits soft and full breast types. Cushion Comfort™ tabs on the inner underarm minimise pressure points, whilst a fully lined inner cup holds the bust, and a deeper, firmer wing mesh provides additional seam-free support.



Full Cup Bra  
CK001111

FEATURING CUSHION COMFORT™



High Waist Brief  
CK001208



Forest Green | Available October 2020 **NEW**



Black | Continuity



Latte | Continuity



Forest Green | Available October 2020 **NEW**



Black | Continuity



Latte | Continuity

	DD	E	F	FF	G	GG	H	HH	J	JJ	K
32					•	•	•	•	•	•	•
34					•	•	•	•	•	•	•
36			•	•	•	•	•	•	•	•	•
38			•	•	•	•	•	•	•	•	•
40			•	•	•	•	•	•	•	•	•
42	•	•	•	•	•	•	•	•	•	•	•
44	•	•	•	•	•	•	•	•	•	•	•
46	•	•	•	•	•	•	•	•	•	•	•

	12	14	16	18	20	22	24
•	•	•	•	•	•	•	•

## FEATURES





# WONDERFULL DD-K cups

We have had an amazing response to our newest full cup bra and are excited to bring it to you in this stunning new colour! Packed with technical features, this 4-part full cup bra has all day comfort at the forefront of its design. The sleek and stylish microfibre cups have stretch mesh top cup panels for a flexible fit, plus anchored back straps to banish strap slippage and a curved underband to reduce roll and discomfort. Wide, firm wing mesh smooths and supports and Cushion Comfort™ pads on the inner underarm minimise pressure points.



Full Cup Bra  
CK018102

FEATURING CUSHION COMFORT™



Short  
CK018201



Deep Red | Available November 2020 **NEW**



Latte | Continuity



Black | Continuity



Deep Red | Available November 2020 **NEW**



Latte | Continuity



Black | Continuity

	DD	E	F	FF	G	GG	H	HH	J	JJ	K
30											
32											
34											
36											
38											
40											
42											
44											
46											

	10	12	14	16	18	20	22	24
30								
32								
34								
36								
38								
40								
42								
44								
46								

## FEATURES



Cushion  
Comfort™



# UNWIND *DD-JJ cups*

Our first non-wired style has been a huge success, adored by both retailers and Curvy Kate fans- you asked for another colour and we are happy to oblige! The bralette gives shape, comfort and style without compromising on support. Perfect for lazy Sunday mornings, the soft elastic neckline offers an ease of fit, while the powermesh lined bottom cups and deeper underband give added support and shape. Now available in flattering and subtle Mink.



Bralette  
CK011110  
NON-WIRED



Short  
CK011201



Mink | Available December 2020 **NEW**



Black | Continuity

	DD/E	F/FF	G/GG	H/HH	J/JJ
30	•	•	•	•	•
32	•	•	•	•	•
34	•	•	•	•	•
36	•	•	•	•	•
38	•	•	•	•	•
40	•	•	•	•	•



Mink | Available December 2020 **NEW**



Black | Continuity

	10	12	14	16	18	20
	•	•	•	•	•	•

# CURVY KATE

## GIRLS NIGHT

- 46 | Lifestyle Lace
- 48 | Twice The Fun
- 52 | Lifestyle
- 54 | Eye Spy
- 56 | Stop & Stare
- 60 | Boost Me Up





# LIFESTYLE LACE *D-J cups*

Our bestselling Lifestyle shape, but with added sass! The ultra-sheer plunge bra in this season's hottest digital colour is enhanced by delicate lace side-cup detail and contrast straps and binding. One of the most popular shapes in our range, the dynamic single layer mesh gives great lift and projection, right up to a J cup.



Plunge Bra  
CK028101  
LIFESTYLE FIT



Brazilian  
CK028202



Blue/Red | Available July 2020 **NEW**

	D	DD	E	F	FF	G	GG	H	HH	J
30	•	•	•	•	•	•	•	•	•	•
32	•	•	•	•	•	•	•	•	•	•
34	•	•	•	•	•	•	•	•	•	•
36	•	•	•	•	•	•	•	•	•	•
38	•	•	•	•	•	•	•	•	•	•
40	•	•	•	•	•	•	•	•	•	•



Blue/Red | Available July 2020 **NEW**

	8	10	12	14	16	18	20
•	•	•	•	•	•	•	•



# TWICE THE FUN DD-JJ cups

NEW





# TWICE THE FUN *DD-JJ cups*

Double the options, double the fun in our reversible bralette! Perfectly styled as underwear or outerwear, the pull-over design has a soft, stretch lace trim and offers amazing comfort, while the double layered microfibre cups will support up to a JJ cup. Multiway straps give even more versatility.



Reversible Bralette  
CK024110

MULTIWAY NON-WIRED



Black/Pink | Available June 2020 **NEW**

	DD/E	F/FF	G/GG	H/HH	J/JJ
30	•	•	•	•	•
32	•	•	•	•	•
34	•	•	•	•	•
36	•	•	•	•	•
38	•	•	•	•	•
40	•	•	•	•	•



Reversible Thong  
CK024200



Black/Pink | Available June 2020 **NEW**

	8	10	12	14	16	18	20
•	•	•	•	•	•	•	•



# LIFESTYLE *D-J cups*

Lifestyle is Curvy Kate's minimalist range that has some seriously cool credentials. The ultra-sheer bra flaunts a plunge neckline, whilst the dynamic single layer mesh gives great lift and projection to a J cup. Now available in super hot Sangria to bring a pop of colour to Autumn.



Plunge Bra  
CK5711



Short  
CK5703



Sangria | Available September 2020 **NEW**



Sangria | Available September 2020 **NEW**



Black | Continuity



Black | Continuity

	D	DD	E	F	FF	G	GG	H	HH	J
30	•	•	•	•	•	•	•	•	•	•
32	•	•	•	•	•	•	•	•	•	•
34	•	•	•	•	•	•	•	•	•	•
36	•	•	•	•	•	•	•	•	•	•
38	•	•	•	•	•	•	•	•	•	•
40	•	•	•	•	•	•	•	•	•	•

	8	10	12	14	16	18	20
•	•	•	•	•	•	•	•



# EYE SPY *DD-HH cups*

Delicate lace and sheer mesh pair perfectly in the new Eye Spy range. Contrast lace sits under the top cup mesh, creating a smooth line under clothes. The semi-sheer, lightweight balcony cups give a fantastic rounded and uplifted shape. Bold and sassy, Eye Spy is one to watch!



Balcony Bra  
CK026100



Brazilian  
CK026202



Black/Turquoise | Available August 2020 **NEW**



Black/Turquoise | Available August 2020 **NEW**



Blush | Continuity from August 2020 **NEW**



Blush | Continuity from August 2020 **NEW**

	DD	E	F	FF	G	GG	H	HH
30	•	•	•	•	•	•	•	•
32	•	•	•	•	•	•	•	•
34	•	•	•	•	•	•	•	•
36	•	•	•	•	•	•	•	•
38	•	•	•	•	•	•	•	•
40	•	•	•	•	•	•	•	•

	8	10	12	14	16	18	20
•	•	•	•	•	•	•	•

STOP & STARE



Love  
Laugh  
Boobs



# STOP & STARE *D-J cups*

A showstopping range designed with party girls in mind! Stop & Stare is the ultimate underwear-as-outerwear, with attention grabbing graphic embroidery that crosses plunging cups, and pops of contrast binding. The super flattering underwired body has an ultra-high leg to lengthen those pins, and sheer panels to flatter any figure.



Plunge Bra  
CK025101  
LIFESTYLE FIT



Black/Pink | Available October 2020 **NEW**

	D	DD	E	F	FF	G	GG	H	HH	J
30	•	•	•	•	•	•	•	•	•	•
32	•	•	•	•	•	•	•	•	•	•
34	•	•	•	•	•	•	•	•	•	•
36	•	•	•	•	•	•	•	•	•	•
38	•	•	•	•	•	•	•	•	•	•
40	•	•	•	•	•	•	•	•	•	•



Plunge Body  
CK025704  
LIFESTYLE FIT



Black/Pink | Available October 2020 **NEW**

	D	DD	E	F	FF	G	GG	H	HH	J
30	•	•	•	•	•	•	•	•	•	•
32	•	•	•	•	•	•	•	•	•	•
34	•	•	•	•	•	•	•	•	•	•
36	•	•	•	•	•	•	•	•	•	•
38	•	•	•	•	•	•	•	•	•	•
40	•	•	•	•	•	•	•	•	•	•



High Waist Brief  
CK025208



Black/Pink | Available October 2020 **NEW**

	8	10	12	14	16	18	20
•	•	•	•	•	•	•	•



Thong  
CK025200

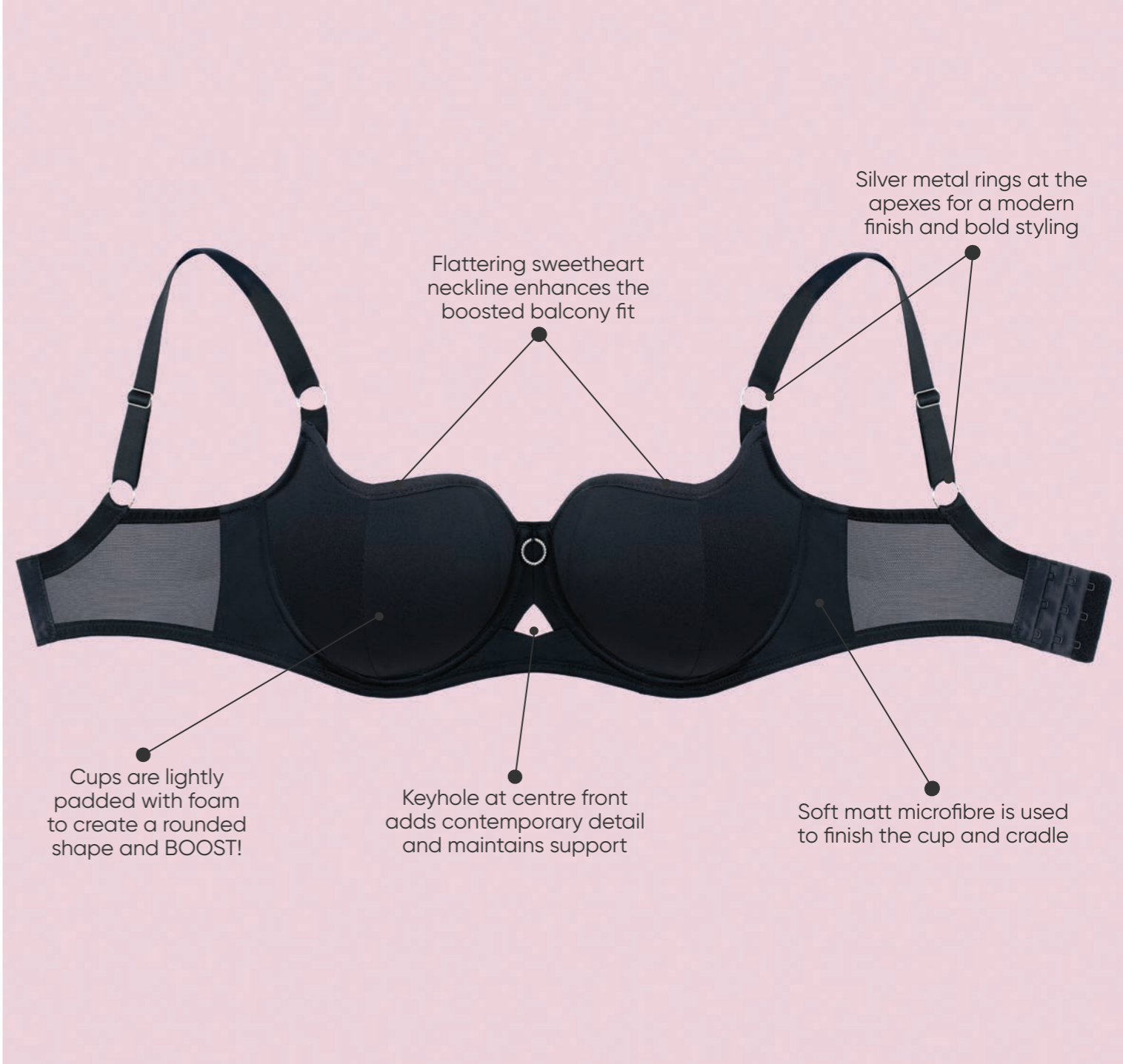


Black/Pink | Available October 2020 **NEW**

	8	10	12	14	16	18	20
•	•	•	•	•	•	•	•

# BOOST ME UP *D-J cups*

NEW





## BOOST ME UP *D-J cups*

Designed to boost your boobs and your mood, this flirtatious range guarantees maximum uplift and projection for a real wow factor! The super flattering sweetheart neckline complements the lightly padded cups that offer an amazing shape. Sleek and stylish, Boost Me Up is sure to become a Curvy Kate favourite.



Padded Balcony Bra  
CK027106



Black | Available November 2020 **NEW**



Padded Balcony Bra  
CK027106



Black | Available November 2020 **NEW**

	D	DD	E	F	FF	G	GG	H	HH	J
30	•	•	•	•	•	•	•	•	•	•
32	•	•	•	•	•	•	•	•	•	•
34	•	•	•	•	•	•	•	•	•	•
36	•	•	•	•	•	•	•	•	•	•
38	•	•	•	•	•	•	•	•	•	•
40	•	•	•	•	•	•	•	•	•	•
42	•	•	•	•	•	•	•	•	•	•
44	•	•	•	•	•	•	•	•	•	•





*Curvy Kate®*

Unit 1 The Hawthorn Centre, Elmgrove Road, Harrow, Middlesex, HA1 2RF, United Kingdom

Tel: +44 (0) 20 8861 3111 | Email: [customersupport@curvykate.com](mailto:customersupport@curvykate.com)

[WWW.CURVYKATEWHOLESALE.COM](http://WWW.CURVYKATEWHOLESALE.COM)